

Vela shelving system 100x50x20

by Ramón Esteve

Vela Collection, designed by Ramon Esteve for Vondom. This extensive outdoor furniture and plantpot collection aims to offer the comfort and the quality of interior furniture without losing it's original qualities.

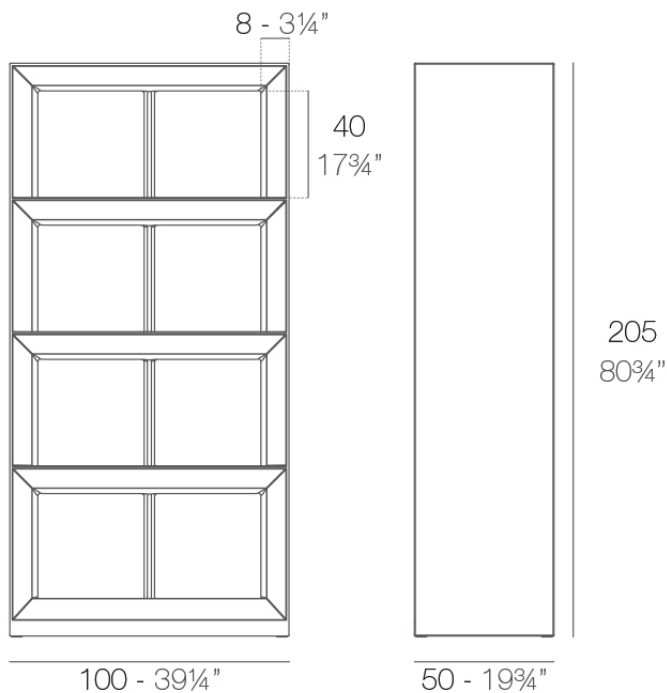


Info

Description

Made of polyethylene resin by rotational moulding. 100% Recyclable. Item suitable for indoor and outdoor use. Available in different finishes.

Weight: 40.05 Kg



VELA Contrabarra
VELA Shelving system

Finishes

finishes

BASIC

Ref. 54124



purjai red



orange



ice



notte blue



crema



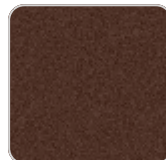
green



white



black



bronze



steel



anthracite



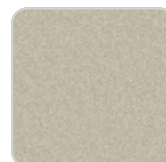
red



khaki



taupe



ecru



VONDOM

beige



Matt Polyethylene

LACQUERED

Ref. 54124F



purjai red



crema



white



black



bronze



steel



anthracite



red



khaki



taupe



ecru



beige



modo green



champany

Lacquered Polyethylene

lighting

WHITE LED

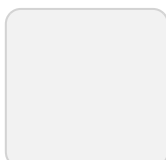
Ref. 54124W



White internally lit unit with LED technology. Available only in matte ice white finish.

RGBW LED

Ref. 54124L



Unit with internal lighting with RGBW LED technology and remote control unit for switching colors. Available only in matte ice white finish. Remote control included.

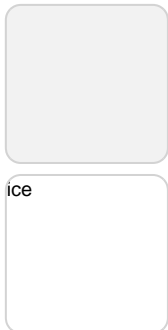
RGBW LED DMX

Ref. 54124D



Unit with internal lighting with RGBW LED technology and remote control unit for switching colors. Also controlled by DMX-1024 (wireless), enabling communication between one or more products simultaneously via the DMX transmitter (not included). There are two options to choose from: Professional XLR DMX and Home WIFI DMX. (Remote control included).
Optional battery

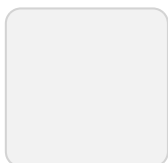
RGBW LED BATTERY
Ref. 54124Y



Unit with internal lighting with battery-powered RGBW LED technology. Includes charger and remote control for switching colors and charger. Available only in matte ice white finish.

RGBW LED DMX BATTERY
Ref. 54124DY

VONDOM



Unit with internal lighting with RGBW LED technology and remote control unit for switching colors. Also controlled by DMX-1024 (wireless), enabling communication between one or more products simultaneously via the DMX transmitter (not included). There are two options to choose from: Professional XLR DMX and Home WIFI DMX. (Remote control included).

Ambients

