

Stone planter 86x64x100

by Stefano Giovannoni & Elisa Gargan

Stone outdoor furniture collection, designed by Stefano Giovannoni, convinces with its organic shapes. As its name suggests it appears to be found in nature itself, creating synergism between the natural and the artificial landscape. Stone can fit perfectly into any environment, transmitting its own particular elegance, thanks to its material, as well as its original shape.

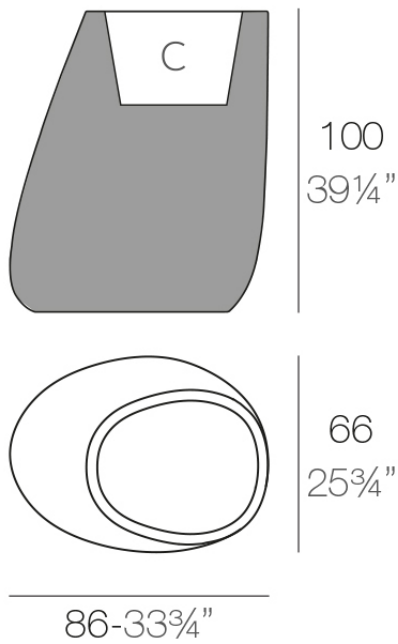


Info

Description

Pot made of polyethylene resin by rotational moulding. 100% Recyclable. Item suitable for indoor and outdoor use. Available in different finishes.

Weight: 16 Kg



STONE Macetero 100 C = 52 L (14 x 39 cm)
STONE Planter 100 C = 13 1/2 gal (51 x 25 3/4")

Finishes

finishes

BASIC

Ref. 55010A



ice



orange



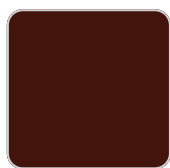
notte blue



crema



green



purjai red



white



black



bronze



steel



anthracite



red



khaki



taupe



ecru



beige

Matt Polyethylene

SELF-WATERING

Ref. 55010R

VONDOM



ice



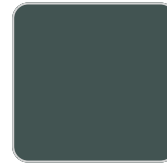
orange



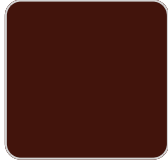
notte blue



crema



green



purjai red



white



black



bronze



steel



anthracite



red



khaki



taupe



ecru



beige

Self-watering system included in all planters except those with basic finish

LACQUERED

Ref. 55010F



orange



notte blue



crema



purjai red



white



black



bronze



steel



anthracite



red

VONDONM



khaki



taupe



ecru



beige



modo green



champany

Lacquered Polyethylene

lighting

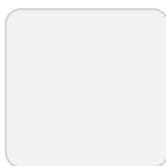
WHITE LED
Ref. 55010W



ice

White internally lit unit with LED technology. Available only in matte ice white finish.

RGBW LED
Ref. 55010L



ice

Unit with internal lighting with RGBW LED technology and remote control unit for switching colors. Available only in matte ice white finish. Remote control included.

RGBW LED DMX Ref. 55010D



ice

Unit with internal lighting with RGBW LED technology and remote control unit for switching colors. Also controlled by DMX-1024 (wireless), enabling communication between one or more products simultaneously via the DMX transmitter (not included). There are two options to choose from: Professional XLR DMX and Home WIFI DMX. (Remote control included).
Optional battery

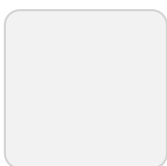
RGBW LED BATTERY Ref. 55010Y



ice

Unit with internal lighting with battery-powered RGBW LED technology. Includes charger and remote control for switching colors and charger. Available only in matte ice white finish.

RGBW LED DMX BATTERY Ref. 55010DY



ice

Unit with internal lighting with RGBW LED technology and remote control unit for

VONDOM

switching colors. Also controlled by DMX-1024 (wireless), enabling communication between one or more products simultaneously via the DMX transmitter (not included). There are two options to choose from: Professional XLR DMX and Home WIFI DMX. (Remote control included).

Ambients

