

## Stone planter 60x46x70

by Stefano Giovannoni & Elisa Gargan

Stone outdoor furniture collection, designed by Stefano Giovannoni, convinces with its organic shapes. As its name suggests it appears to be found in nature itself, creating synergism between the natural and the artificial landscape. Stone can fit perfectly into any environment, transmitting its own particular elegance, thanks to its material, as well as its original shape.



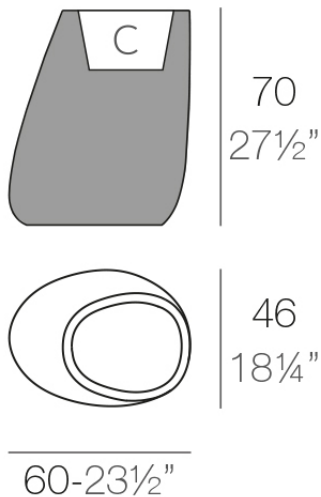
## Info

---

### Description

Pot made of polyethylene resin by rotational moulding. 100% Recyclable. Item suitable for indoor and outdoor use. Available in different finishes.

Weight: 8 Kg



STONE Macetero 70

STONE Planter 70

C = 20 L (9 x 28 cm)

C = 5 1/2 gal (4 x 10 1/2")

## Finishes

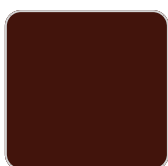
---

### finishes

---

#### BASIC

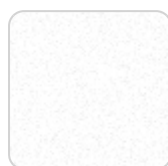
Ref. 55009A



purjai red



orange



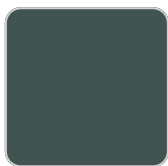
ice



notte blue



crema



green



white



black



bronze



steel



anthracite



red



khaki



taupe



ecru



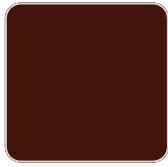
beige

#### Matt Polyethylene

#### SELF-WATERING

Ref. 55009R

# VONDOM



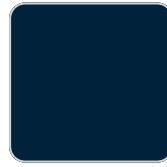
purjai red



orange



ice



notte blue



crema



green



white



black



bronze



steel



anthracite



red



khaki



taupe



ecru



beige

Self-watering system included in all planters except those with basic finish

## LACQUERED

Ref. 55009F



purjai red



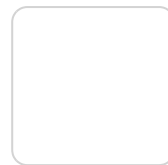
orange



notte blue



crema



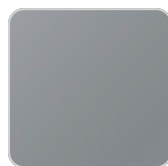
white



black



bronze



steel



anthracite



red

# VONDOM



khaki



taupe



ecru



beige



modo green



champany

Lacquered Polyethylene

## lighting

---

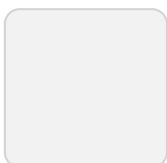
WHITE LED  
Ref. 55009W



ice

White internally lit unit with LED technology. Available only in matte ice white finish.

RGBW LED  
Ref. 55009L



ice

Unit with internal lighting with RGBW LED technology and remote control unit for switching colors. Available only in matte ice white finish. Remote control included.

## RGBW LED DMX Ref. 55009D



ice

Unit with internal lighting with RGBW LED technology and remote control unit for switching colors. Also controlled by DMX-1024 (wireless), enabling communication between one or more products simultaneously via the DMX transmitter (not included). There are two options to choose from: Professional XLR DMX and Home WIFI DMX. (Remote control included).  
Optional battery

## RGBW LED BATTERY Ref. 55009Y



ice

Unit with internal lighting with battery-powered RGBW LED technology. Includes charger and remote control for switching colors and charger. Available only in matte ice white finish.

## RGBW LED DMX BATTERY Ref. 55009DY



ice

Unit with internal lighting with RGBW LED technology and remote control unit for

# VONDOM

switching colors. Also controlled by DMX-1024 (wireless), enabling communication between one or more products simultaneously via the DMX transmitter (not included). There are two options to choose from: Professional XLR DMX and Home WIFI DMX. (Remote control included).

## Ambients

---

