

## Mari-sol table base ø80 h:50cm

by Eugeni Quitllet

Mari-sol Collection, designed by Eugeni Quitllet for Vondom, is composed by a design table that **combines technology in its function with sensuality** in its shape. The answer for adorning terraces around the world.



## Info

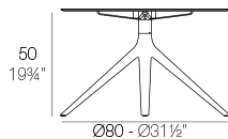
---

### Description

Extruded aluminum tube with cast aluminum base coated with epoxy baked painting. Item suitable for indoor and outdoor use. Table top not included.

Weight: 4.67 Kg

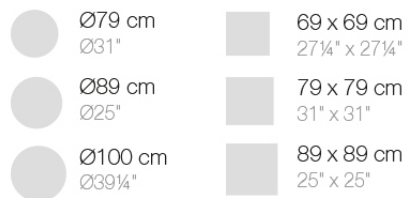
BASE 4 LEGS - BASE 4 PATAS



fixed top / fijo ref: 65015  
fixed for glass / fijo para vidrio ref: 65015V

MARI-SOL BASE MESA Ø80 H50  
MARI-SOL TABLE BASE Ø31 1/2" H19 3/4"

TABLE TOPS OPTIONS - OPCIONES SOBRES



## Finishes

---

### finishes

---

Fixed  
Ref. 65015



white



british gray



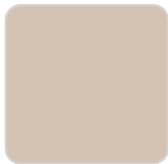
traffic gray



black



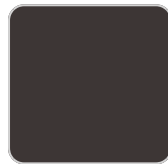
ecru



crema



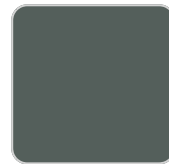
castoro fiber



cacao



notte blue



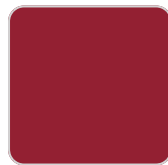
modo green



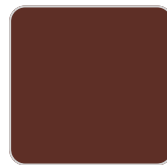
pickle



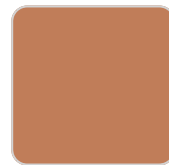
almond



red



purjai red



melon



# VONDOM

mostaza



Powder coated aluminum base with non collapsable attachment made of polyamide and fiber glass

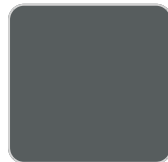
Fixed glass  
Ref. 65015V



white



british gray



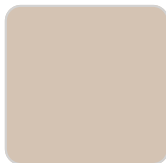
traffic gray



black



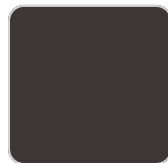
ecru



crema



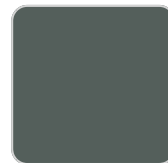
castoro fiber



cacao



notte blue



modo green



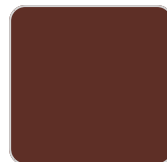
pickle



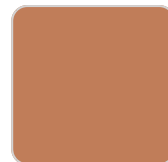
almond



red



purjai red



melon



# VONDOM

mostaza



Powder coated aluminum base with non collapsable aluminum attachment powder coated, made exclusively for our glass tops.

## Ambients

---



# VONDOM

