

## Mari-sol 4-legged double table base

by Eugeni Quitllet

Mari-sol Collection, designed by Eugeni Quitllet for Vondom, is composed by a design table that **combines technology in its function with sensuality** in its shape. The answer for adorning terraces around the world.



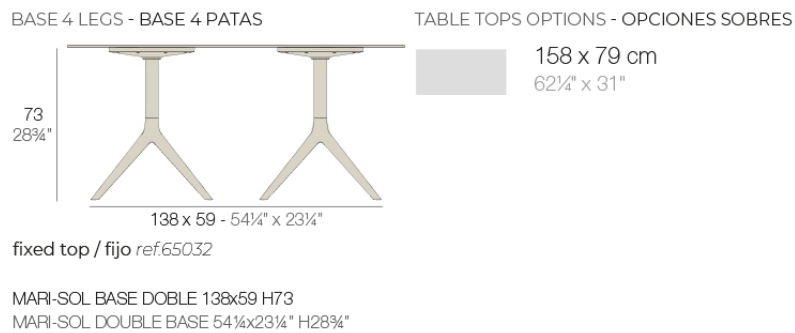
## Info

---

### Description

Extruded aluminum tube with cast aluminum base coated with epoxy baked painting. Item suitable for indoor and outdoor use. Table top not included.

Weight: 9.8 Kg



## Finishes

---

### finishes

---

Fixed  
Ref. 65032



white



british gray



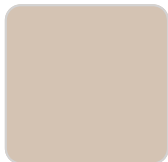
traffic gray



black



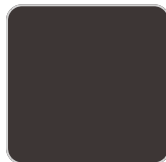
ecru



crema



castoro fiber



cacao



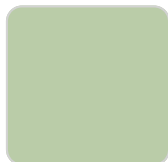
notte blue



modo green



pickle



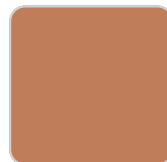
almond



red



purjai red



melon



mostaza



Powder coated aluminum base with non collapsable attachment made of polyamide and fiber glass

## tabletops

---

HPL

Ref. 66413

HPL black edge

Solid Core

Ref. 66413B

HPL solid core

