

## Love mini chair

by Eugeni Quitllet

This collection was designed by Eugeni Quitllet and inspired by the concept of “Love”, a feeling that envelops body and soul, although it is invisible to the human eye it is a wonderful embellisher of everything that surrounds us. The injection technique used to manufacture this collection allows each piece to have it's own personality, it's simple and curved silhouettes, fit in an organic and natural way; this collection is suitable for both indoor and outdoor spaces.



## Info

---

### Description

Made from polypropylene and reinforced with fiberglass manufactured by gas injection. Stackable . Available in various colors. Suitable for indoor and outdoor use.

Weight: 2.44 Kg



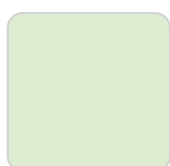
## Finishes

---

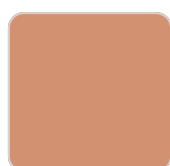
### finishes

---

BASIC PP  
Ref. 65043



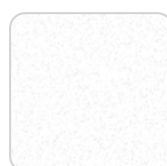
almond



melon



navy



white



black



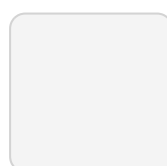
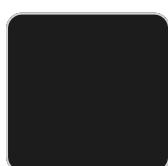
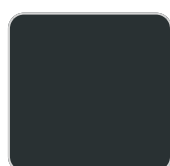
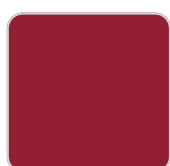
red



ecru

Available in various colors

LACQUERED COLOR INJECTION PP  
Ref. 65043F

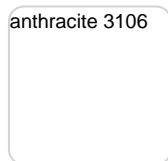


# VONDOM

red 3114



anthracite 3106



black 3102



white 3101



—

## Ambients

---

