

Incasso swivel armchair

by Archirivolto Design

A highly customizable armchair, from the seat to the base, the color and even the material. Designed by Archirivolto Design.

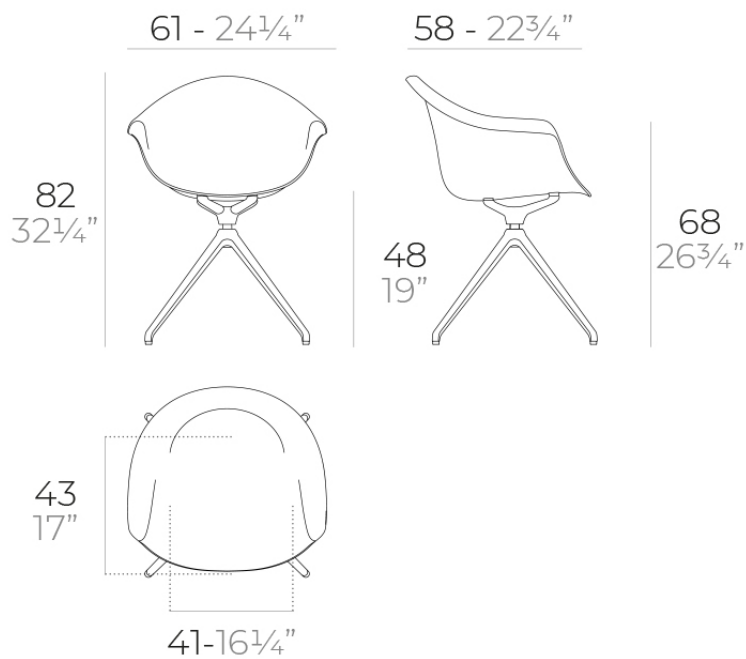


Info

Description

Made from polypropylene and reinforced with fiberglass manufactured by gas injection. Available in various colors. Suitable for indoor and outdoor use.

Weight: 8.6 Kg



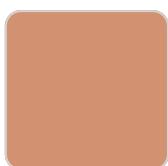
INCASSO Sillón giratorio
INCASSO Swivel Armchair

Finishes

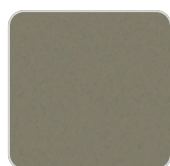
finishes

BASIC PP

Ref. 56031



melon



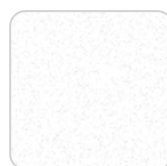
tortora



ecru



black



white

Available in various colors

legs

LEGS

Ref. 65053E



white



black

Ambients

