

Blow lounge chair

by Stefano Giovannoni

Blow Collection, designed by **Stefano Giovannoni** for Vondom, comes from the willing to develop a **new family of in&out design products** in tune with the Pillow family but different in typology.

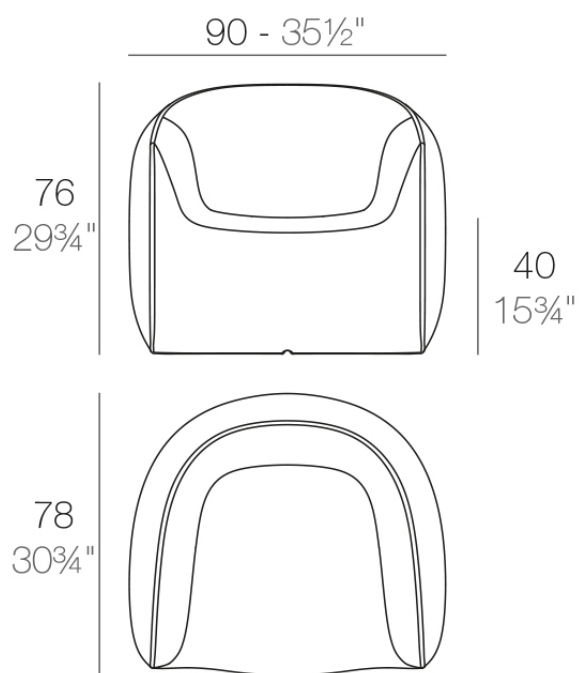


Info

Description

Made of polyethylene resin by rotational moulding. 100% Recyclable. Item suitable for indoor and outdoor use. Available in different finishes.

Weight: 15 Kg



BLOW Butaca
BLOW Lounge Chair

Accessories

- **Fabric**

Fabric

Finishes

finishes

BASIC

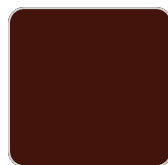
Ref. 55014



notte blue



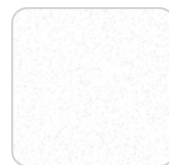
crema



purjai red



orange



white



black



bronze



steel



anthracite



red



khaki



taupe



ecru



beige



ice



VONDOM

green



Matt Polyethylene

LACQUERED

Ref. 55014F



notte blue



crema



modo green



purjai red



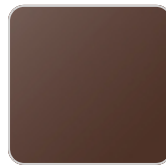
orange



white



black



bronze



steel



anthracite



champany



red



khaki



taupe



ecru



beige



Lacquered Polyethylene

lighting

WHITE LED
Ref. 55014W

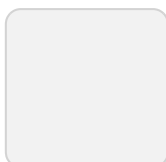


ice



White internally lit unit with LED technology. Available only in matte ice white finish.

RGBW LED
Ref. 55014L



ice



Unit with internal lighting with RGBW LED technology and remote control unit for switching colors. Available only in matte ice white finish. Remote control included.

RGBW LED DMX Ref. 55014D



Unit with internal lighting with RGBW LED technology and remote control unit for switching colors. Also controlled by DMX-1024 (wireless), enabling communication between one or more products simultaneously via the DMX transmitter (not included). There are two options to choose from: Professional XLR DMX and Home WIFI DMX. (Remote control included).
Optional battery

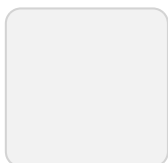
RGBW LED BATTERY Ref. 55014Y



Unit with internal lighting with battery-powered RGBW LED technology. Includes charger and remote control for switching colors and charger. Available only in matte ice white finish.

RGBW LED DMX BATTERY Ref. 55014DY

VONDOM



Unit with internal lighting with RGBW LED technology and remote control unit for switching colors. Also controlled by DMX-1024 (wireless), enabling communication between one or more products simultaneously via the DMX transmitter (not included). There are two options to choose from: Professional XLR DMX and Home WIFI DMX. (Remote control included).

Ambients

