

Biophilia chair

by Ross Lovegrove

The Biophilia furniture design collection, by Ross Lovegrove, explores a new avenue of design that forms a dialogue between time, shape and space. It combines the trend-setting natural design of the Sagrada Família by Antonio Gaudí, VONDOM's expertise in advanced rotational moulding technology and the ongoing line of research of digital transference into contemporary design.

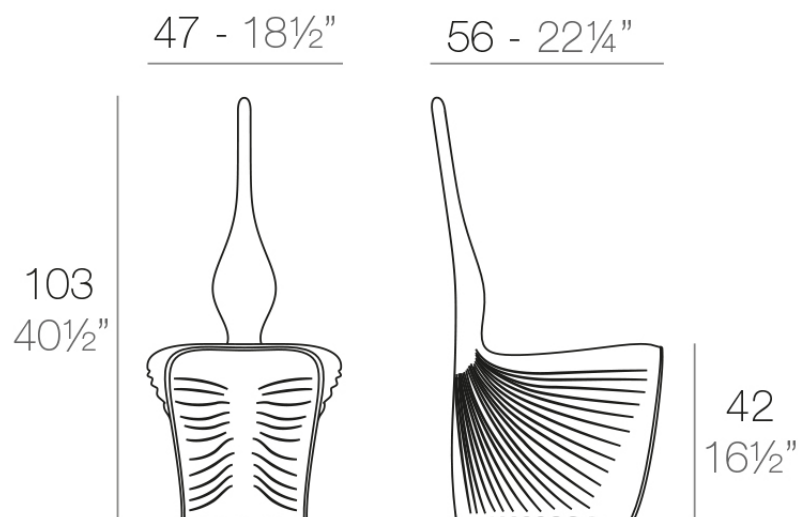


Info

Description

Made of polyethylene resin by rotational moulding. 100% Recyclable. Item suitable for indoor and outdoor use. Available in different finishes.

Weight: 3.65 Kg



BIOPHILIA Silla
BIOPHILIA Chair

Accessories

- **Fabric**

Fabric

Finishes

finishes

BASIC

Ref. 59001



white



black



bronze



steel



anthracite



khaki



taupe



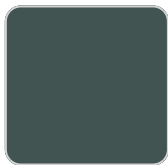
ecru



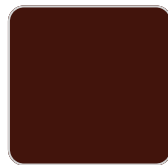
beige



crema



green



purjai red



orange



ice



notte blue



VONDOM

red



Matt Polyethylene

LACQUERED

Ref. 59001F



white



black



bronze



steel



anthracite



champany



khaki



taupe



ecru



beige



crema



purjai red



orange



notte blue



red



VONDOM

modo green



Lacquered Polyethylene

TWO-TONE LACQUERED

Ref. 59001FP



white/red



white



black



bronze



steel



anthracite



champany



pistachio



khaki



navy



taupe



ecru



beige

Two-tone lacquered Polyethylene

Ambients

